

critical path manager

The intensified need for speed-to-market, in response to fast-changing trends and competitive margins, is the driving force in today's apparel and footwear industry. In addition, late deliveries and substandard products have disastrous effects on a company's sales and image.

The attune Critical Path Manager solution provides the exceptional agility and visibility needed across the entire fashion value chain. It is designed to maximize the business processes inherent in the SAP® Apparel and Footwear (SAP AFS)™ application portfolio.

Unprecedented control of complex product dynamics.

During the various stages of product design, development and quality control, complex product dynamics are in constant flux. These include multiple SKUs, along with diverse attributes for instance color, size and quantity.

The attune Critical Path Manager provides the superior visibility needed for the efficient management of resources. Exacting control of day-to-day operations. And the precise monitoring that ensures on-time, on-budget delivery of finished goods.

An invaluable element for planning and monitoring.

By providing real-time status summary of specific critical paths, the attune Critical Path Manager details both completed and delayed activities. Automated alerts serve to highlight areas where corrective actions are needed. These alerts can also be defined to provide warnings about possible delays – and/or reminders to keep projects on track.



Designed to maximize the rich functionality and exceptional scalability of the SAP® Apparel and Footwear (SAP AFS)™ application solution, the attune Critical Path Manager is a unifying element that enhances visibility, monitoring and control across the entire supply chain. Helping companies to effectively manage and respond to the continual flux that is inherent in today's fast-paced manufacturing environments.

attuned to the vision.

The attune group was created through the synergy of a major apparel production conglomerate, leading fashion & apparel consultancies, and senior SAP corporate executives. With over a decade of experience as an SAP® solution provider – and a comprehensive offering of full lifecycle services for manufacturers, brand owners and retailers – its mission is to make great fashion companies greater.

STRUCTURAL OVERVIEW

The attune Critical Path Manager can be divided into two main sections: the Activity Maintenance section and the CPM Cockpit.

Activity Maintenance. Enables the definition of the following parameters:

critical paths.

Defined relevant to a specific business process.

dependencies.

Users can specify which activities are interdependent, enabling warnings to be sent to the dependent process of a possible delay.

alerts.

Defined with specific activation instructions.

CPM Cockpit. Provides a dashboard view of each critical path defined through Activity Maintenance. While displaying the status of each activity defined under a specific critical path.

Through the CPM Cockpit, Planned Days will be calculated based on the Factory calendar. If dependencies were specified in Activity Maintenance and delays occur, the dependent process will be notified. Reminders and alerts are also triggered when delays occur.

Prepackaged Reports. The attune Critical Path Manager comes with comprehensive suite of prepackaged reports including:

status report.

Provides a detailed account on the selected activities.

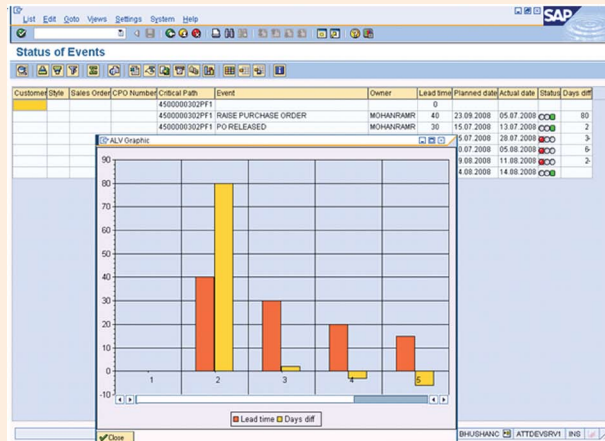
on-time tracking (OTT).

A hit-rate report providing percentage breakdown of activities, based on the comparison of planned dates and actual dates. Subsequent breakdowns can be made by department, event and event owner.

KEY FEATURES

- Full control of key preproduction order-related activities
- Configuration by plant or business unit
- Traffic-light system for status of activities
- Calculation of planned dates based on the Factory Calendar

- Multilevel alerts system (email/SAP message)
- Comments on each activity
- Critical activities can be linked with standard SAP® transactions
- Analysis reports with graphical views



KEY BENEFITS

- Real-time visibility of the overall critical path
- Tracks key milestones in a typical supply-chain critical path
- Significantly enhances communication via email/SAP messages
- Sends a warning when one or more activities are delayed, so corrective actions can be taken
- Collaborative and coordinated execution of activities
- Effective management of resources
- Improves efficiency and helps to meet demanding deadlines
- Increased customer satisfaction due to on-time delivery
- Provides accurate information regarding order status
- Flexible reports

AUSTRALIA
attune Australia Pty Ltd.
Level 1, 499 St. Kilda Road
Melbourne, VIC 3004
Australia

GERMANY
attune Germany GmbH
Parking 2
85748 Garching
Germany

HONG KONG
attune Hong Kong Ltd.
8/F Bank of America Tower
12 Harcourt Road
Central
Hong Kong

INDIA
attune Consulting India Pvt Ltd.
53/2 Richmond Road
Bangalore 560025
India

ITALY
attune Italia S.r.L.
Piazza Filippo Medici 3
20121 Milano
Italy

SRI LANKA
attune Lanka (Pvt) Ltd.
4th Floor, Hemas House
75 Braybrooke Place
Colombo 2
Sri Lanka

UNITED KINGDOM
attune UK Limited
107-111 Fleet Street
London EC4A 2AB
UK

UNITED STATES
attune USA LLC
200 Wheeler Road
2nd Floor South
Burlington, Ma 01803
USA

